

Marshall, Parker & Weber, LLC

Elder Law & Estate Planning For Over 40 Years

**Your Home
Is Your Castle**

90%



Nine in ten seniors intend to continue living in their current homes over the next five to ten years.

United States of Aging Survey Results

Practical Tips - Downsizing in Place

- Clear picture
- Clear path
- Clear horizon



For all that has been, thanks! For all that will be, yes! - Dag Hammarskjold

Practical Tips - Downsizing in Place

Clear Picture

"Begin with the end in mind!"



Practical Tips - Downsizing in Place

Clear Path

"Make a plan!"

- **Small steps** - A little better is a little better!
- **Schedule work sessions** - Take *your* time.
- **Begin with the easy stuff** - What a difference a drawer makes!
- **Set up for sorting** - Spaces, containers, labels.
- **Floor planning** - Decorating for comfort and safety.

Practical Tips - Downsizing in Place

Clear Horizon

"Make it happen!"

- **Sorting it out** - Keep, sell, give donate, toss
- **Household goods** - Furniture, décor, books, art
- **Documents** - Legal, financial, estate records
- **Memories** - Keepsakes, photos, family treasures

Home

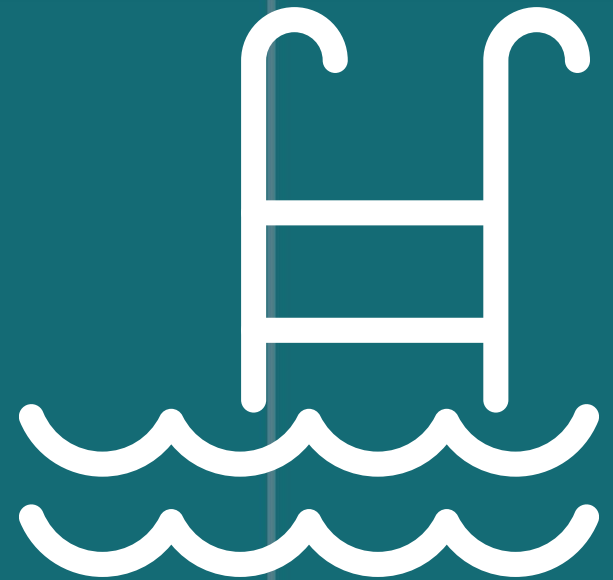
MODIFICATIONS

- Assess consumer's needs
- Draw plans of areas to be modified
- Written scope of work
- Permits
- Cost
- Time for Construction
- Consider the ENTIRE accessible route at the residence, external and internal

Home MODIFICATIONS

External

- Access to home from outdoors
- Stair glide, sidewalks and ramps
- Vertical platform lifts (VPL)
- Door Threshold



Home MODIFICATIONS

External



Home MODIFICATIONS

External



Home MODIFICATIONS

External



Home MODIFICATIONS

External



Home MODIFICATIONS

External



Home MODIFICATIONS

External



Home MODIFICATIONS

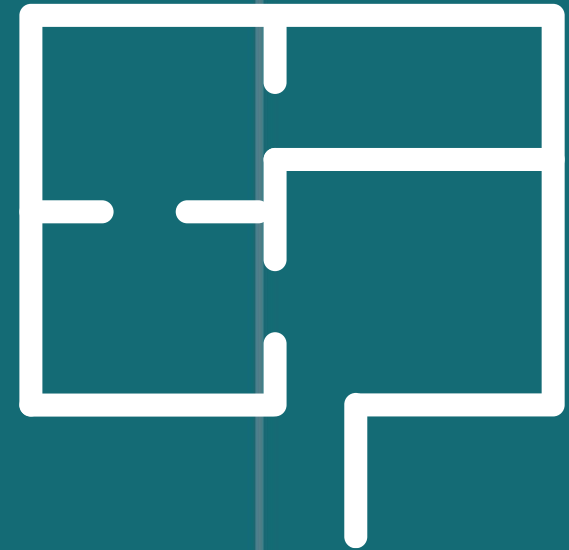
External



Home MODIFICATIONS

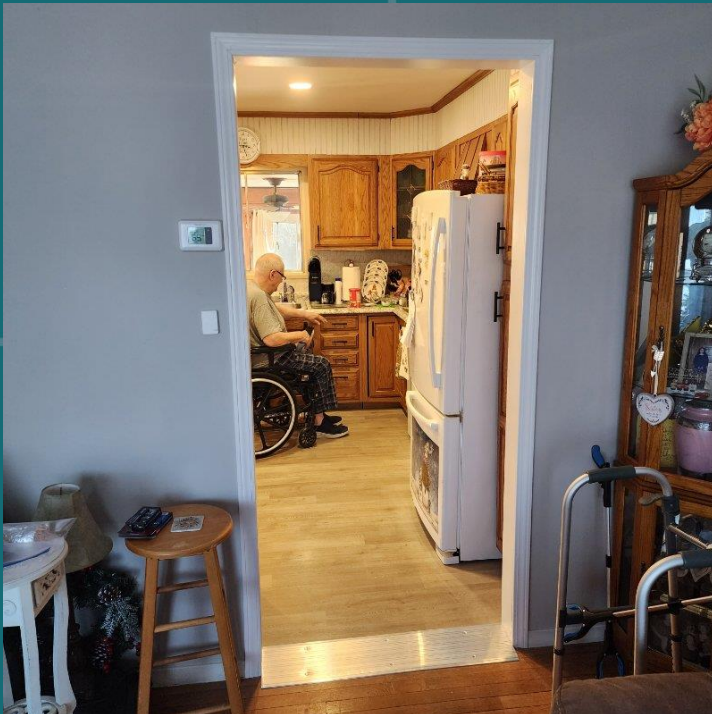
Internal

- Access in and around the house
- Widen doors and halls
- Stair glides or personal elevator
- Change of floor covering



Home MODIFICATIONS

Internal



Home MODIFICATIONS

Internal



Home MODIFICATIONS

Internal



Home MODIFICATIONS

Bathroom

- Toilet height and grab bars
- Shower: Barrier free or beach entry
- Sink accessibility
- Plumbing and electrical issues



Home MODIFICATIONS

Bathroom



Home MODIFICATIONS

Bathroom



Home MODIFICATIONS

Bathroom



Home MODIFICATIONS

Kitchen

- Accessible appliances and cabinets
- Room to maneuver
- Island and sinks



Home MODIFICATIONS

Kitchen



Home MODIFICATIONS

Considerations

- Resale value - are things temporary?
- Don't eliminate a bedroom for a fix
- Ramp construction can be temporary
- Other than grab bars, a bathroom modification can be considered an upgrade
- Wider doorways/hallways will not be detrimental to the resale value of the house

Payment Options

- Privately through a home equity loan
- Community Health Choices Waiver Program (Medical Assistance)
- Independent Enrollment Broker (IEB) at 1-877-550-4227
- Options Program (Area Agency on Aging at www.aging.pa.gov)
- Veterans Administration (www.dmva.pa.gov)

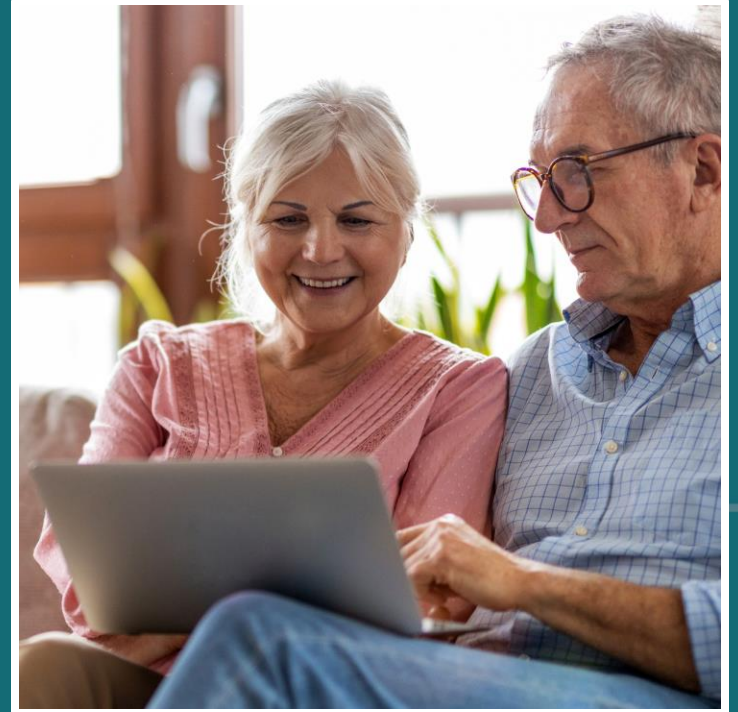
Payment Options - Other Sources

- Centers for Independent Living (www.cilncp.org)
- ACCESS Home Modification Program (www.phfa.org) - deferred payment, no interest, loan payable only when home sold.

Remote SUPPORTS

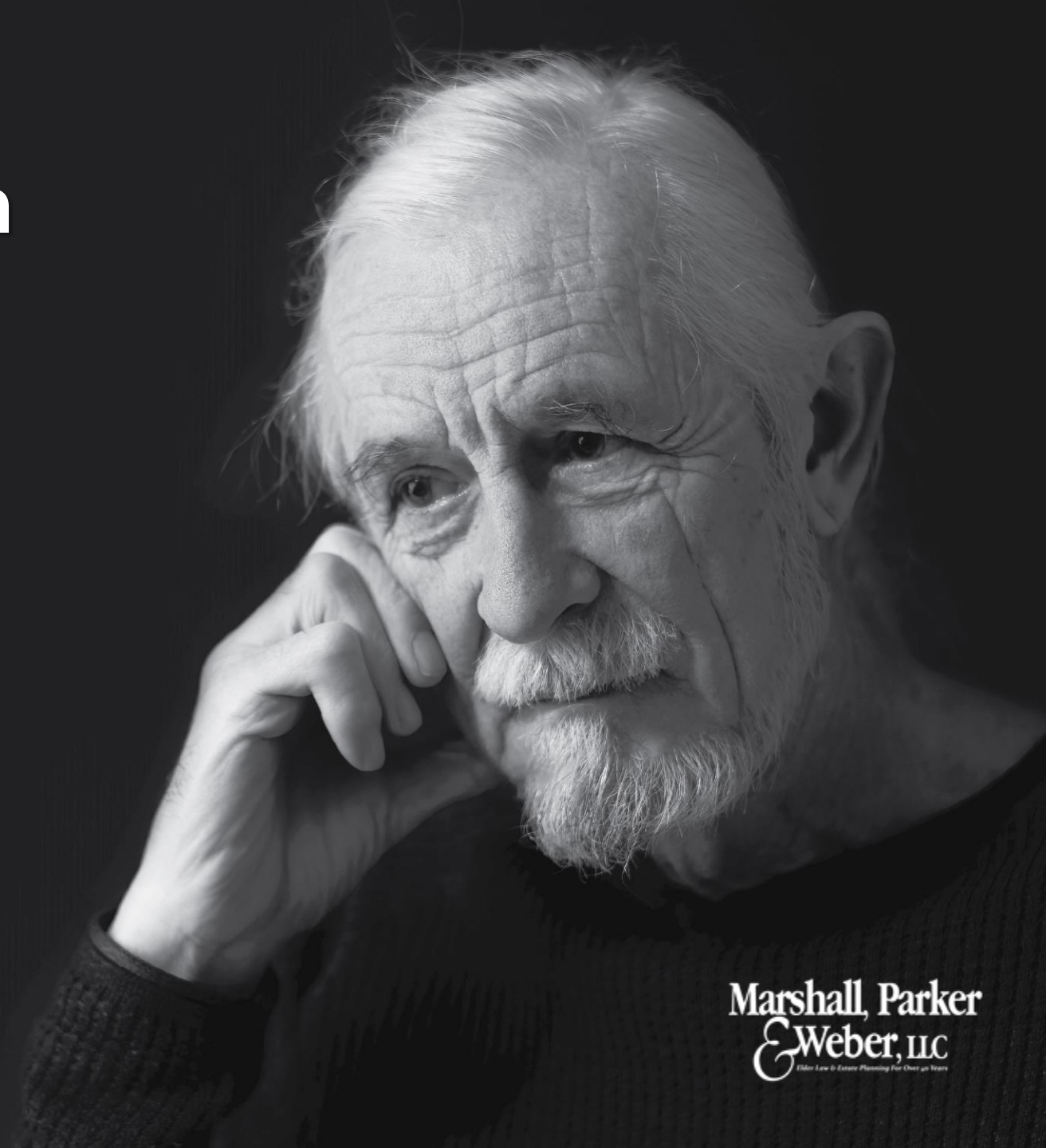
Empowers people to live more independently in their own homes & communities.

It uses a Remote Support staff, trained to handle any situation, and assistive technologies to make daily living safer while respecting the dignity of choice.



Approximately **one in five older** adults in the U.S. experience a mental illness, substance use disorder, or both.

Social isolation has been identified as a contributing factor to the decline of mental health.



Improved Outcomes and Goals

- Continuity of care
- Increased privacy
- Increased independence
- Age in place
- Increased social interactions

5 Elements of Remote Supports Service



Remote Support Staff



Weekly Reports



The Person Supported

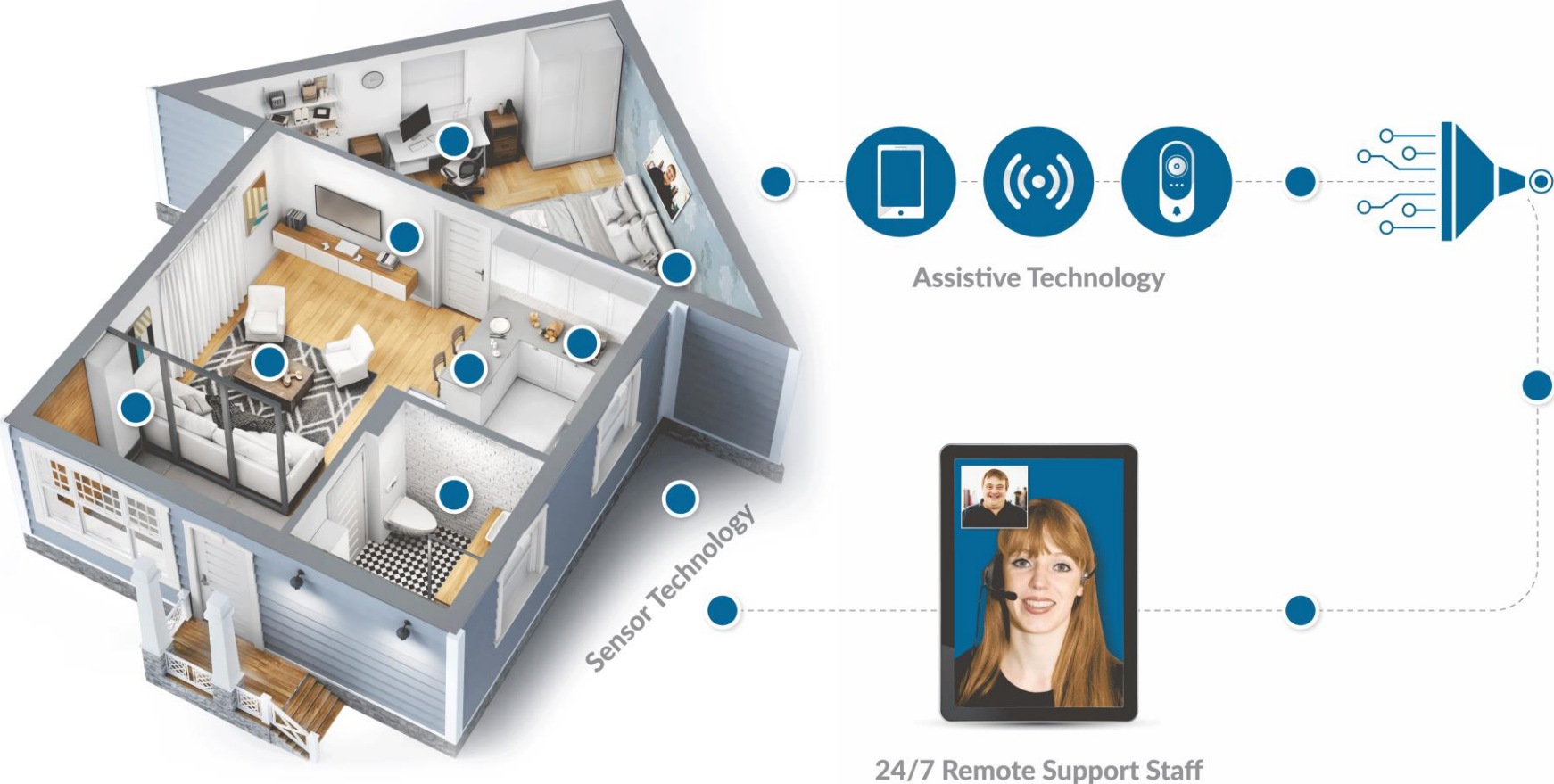


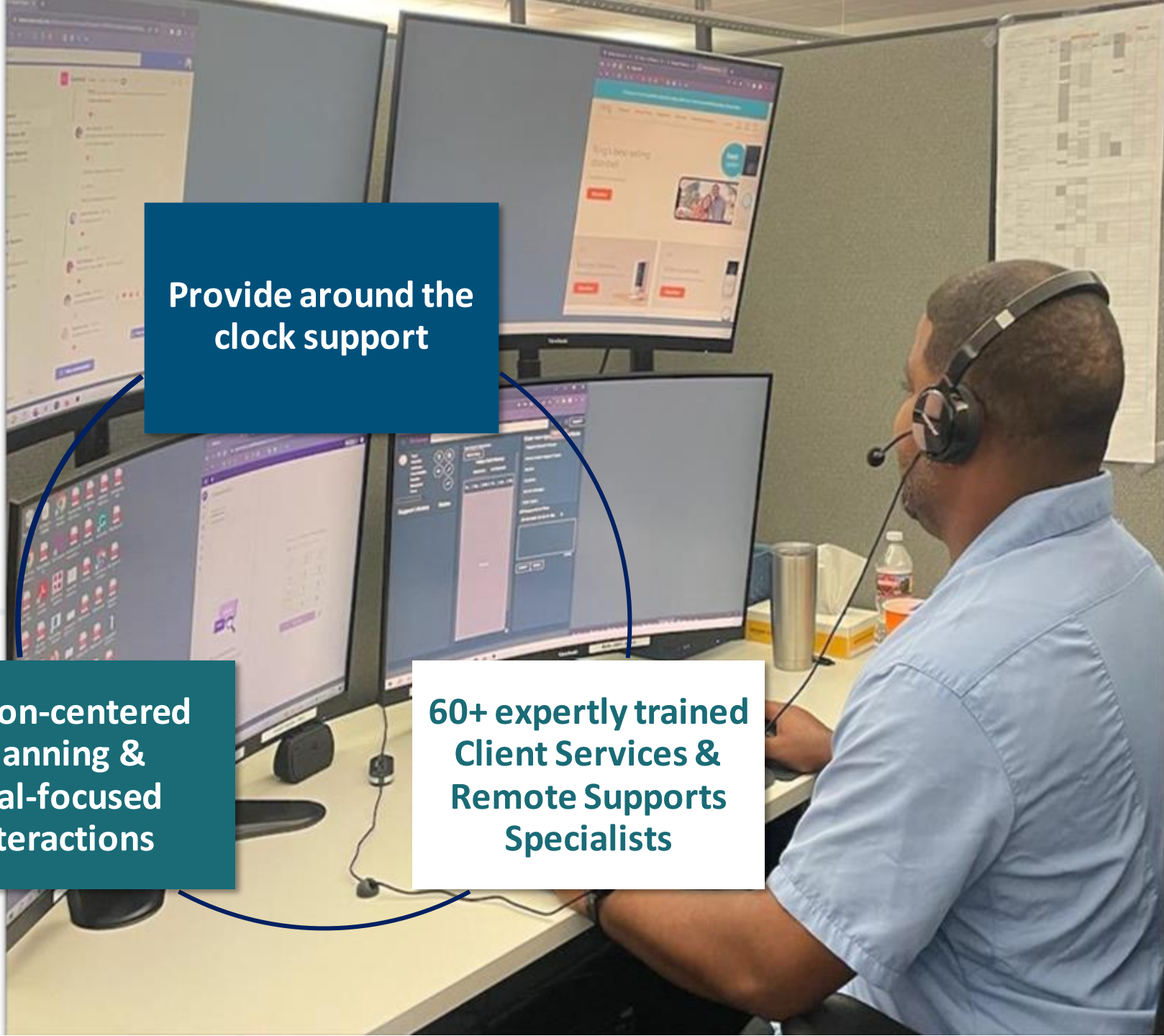
Sensor Technology



Assistive Technologies

How Remote Support Services Work





Provide around the clock support

Person-centered planning & goal-focused interactions

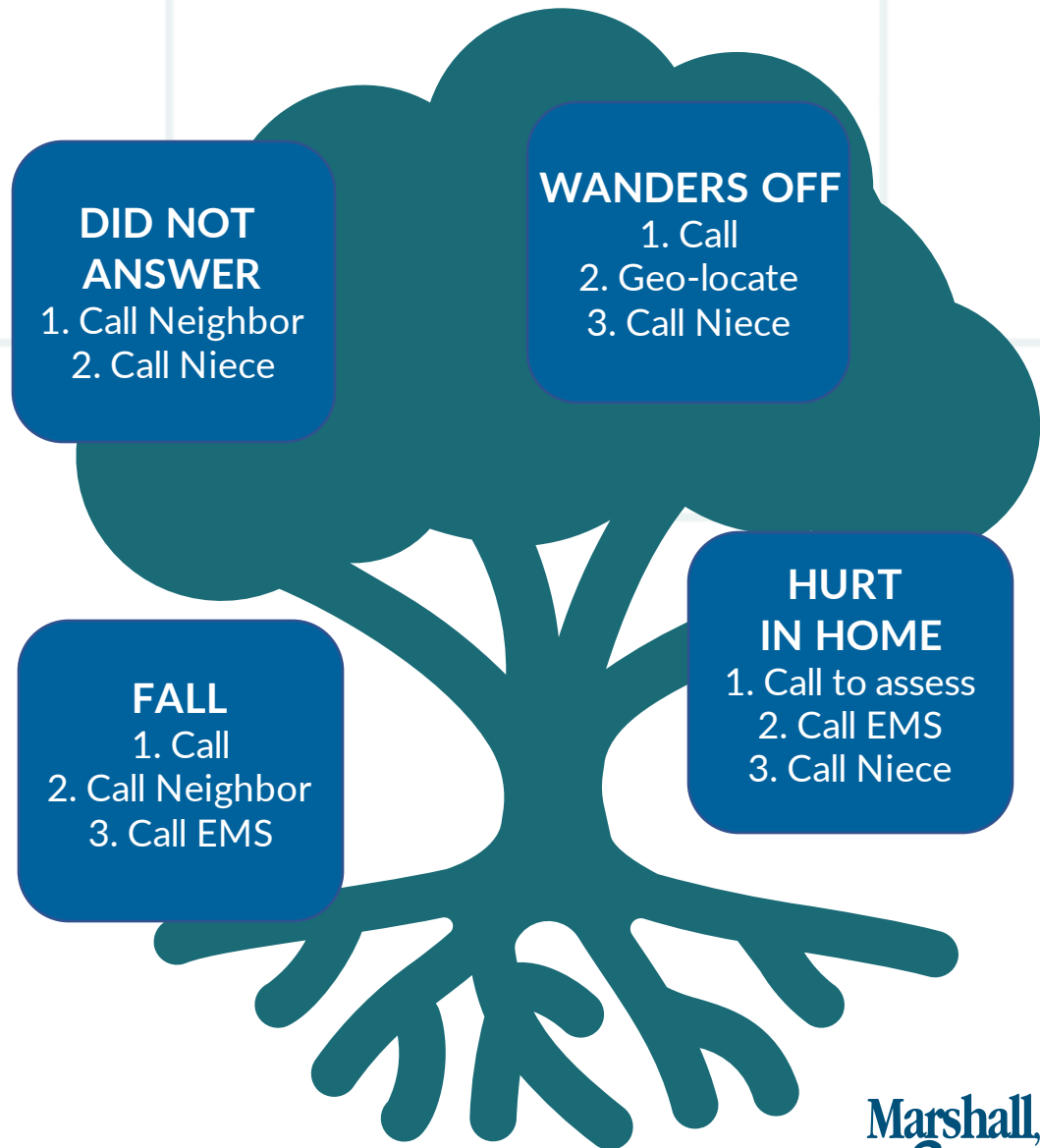
60+ expertly trained Client Services & Remote Supports Specialists

Support Solutions

- Medication management
- Overnight support
- Visitor safety
- Elopement (wandering)
- Kitchen safety
- Seizure management
- Emergency support

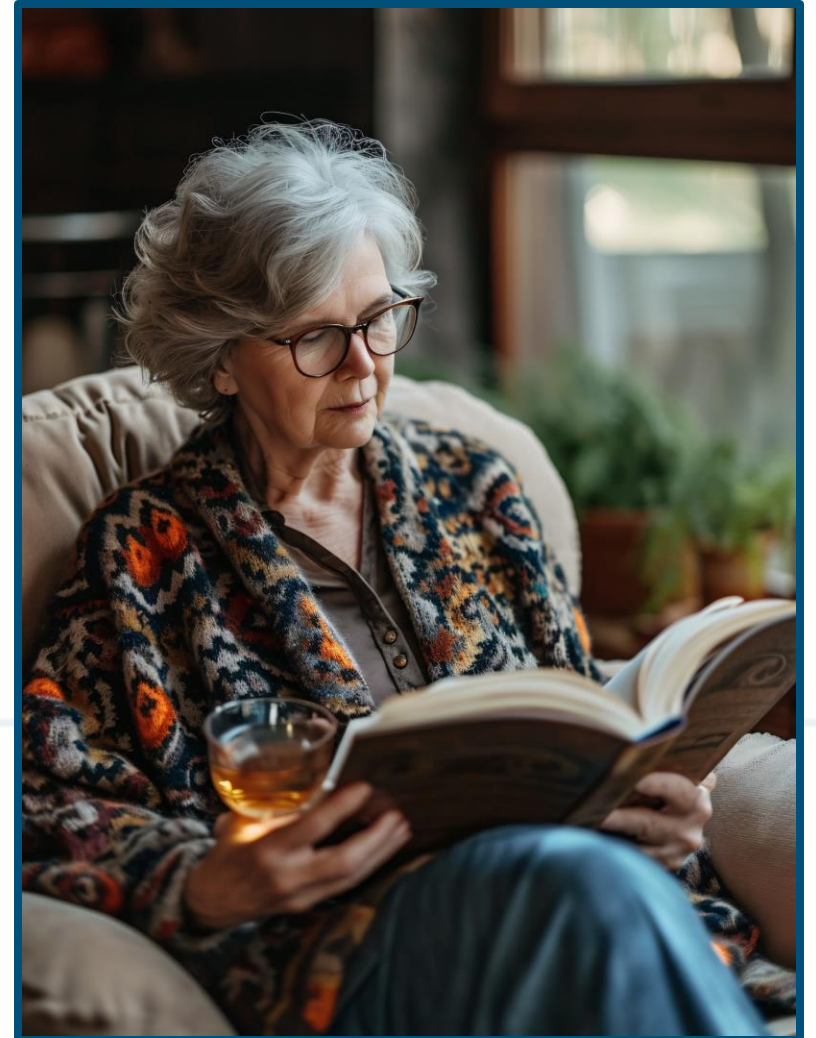
Just in Case

CALL TREE



Who is a good fit?

- ✓ Wants to stay in their own place
- ✓ Prefers not to have “people” in their home, especially overnight
- ✓ Wants to maintain their independence & autonomy for as long as possible
- ✓ Currently have staff conflicts or limited natural supports



EMPOWERING INDEPENDENCE FOR

KATHERINE



Voice-activated devices in her home to use phone, lights and tv



Katherine is 68 and has the beginning stages of macular degeneration



24/7 Remote Supports Staff.



Geocomm
Geo-location device for independence in the community.



Family and remote staff can see who is at the door through the video doorbell.



Tablet
Katherine gets daily check-in calls from Remote Supports



Medication dispenser
with correct dosage and timing.



Katherine's son and his wife.



Motion Sensors
Send alerts to Remote Staff when a lack of motion is detected

Meet Katherine


Contact Information

Therese M. Miller - Senior Move Manager, Owner, Horizon Partners info@lighterhorizons.com 570-847-8987

Arthur “Art” T. Thomas - Diversified Construction art@divcon1.com 570-850-1834

Stephanie N. McDonald - Account Executive, SafeinHome smcdonald@safeinhome.com 845-527-0124

Tammy A. Weber - Marshall, Parker & Weber, LLC tweber@paelderlaw.com 570-321-9008



**Marshall, Parker
& Weber, LLC**
Elder Law & Estate Planning For Over 40 Years

**Thank You for
Attending!**